



Malaysia 马来西亚 Thailand 泰国



**MCE TECHNOLOGIES SDN. BHD.**

**- A Subsidiary of UWC Berhad**



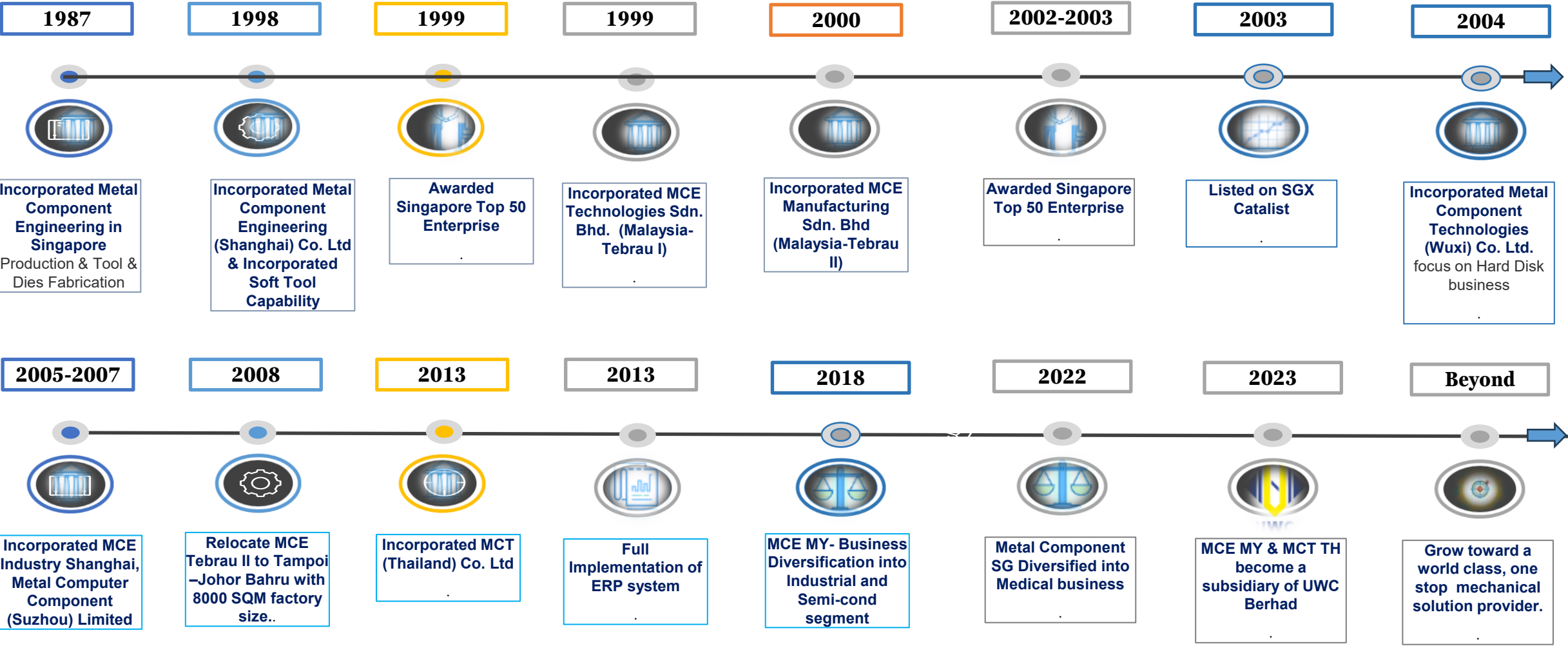
*- Previously known as Metal Component Engineering Ltd.*

**Your One-Stop Mechanical Manufacturing Solutions Provider**

**您的壹站式機構零組件制造商**



# MCE's Milestones 美特尔金属制品有限公司- 重要里程碑





### END-TO-END

Manufacturing solutions in precision engineering and mechanical integration.

终端到终端

提供一站式机精密零件，械制造解决方案

### DEFENSIBLE EXPERTISE

Consumer electronics, automotive, large-format image printing, industrial, semi-con sheet metal fabrication.

拥有丰富经验，专才

消费电子、汽车、打印机、工业、半导体钣金加工

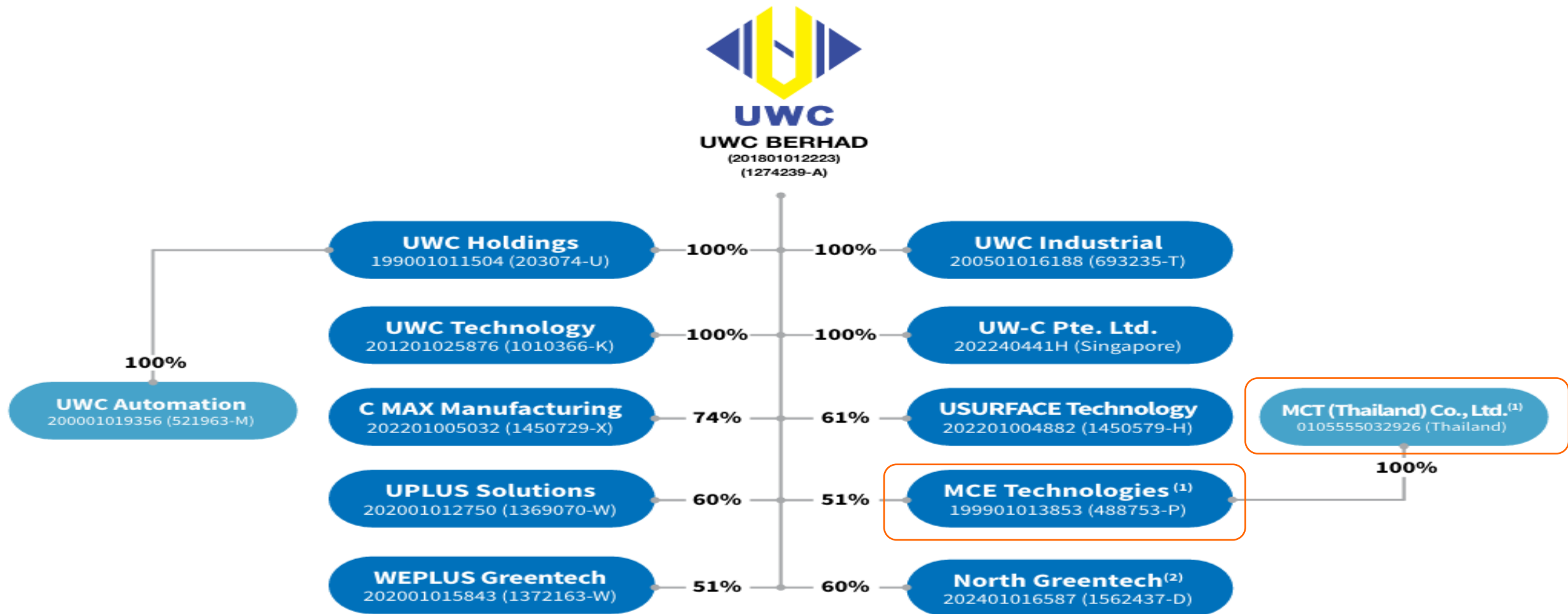
1987



2026

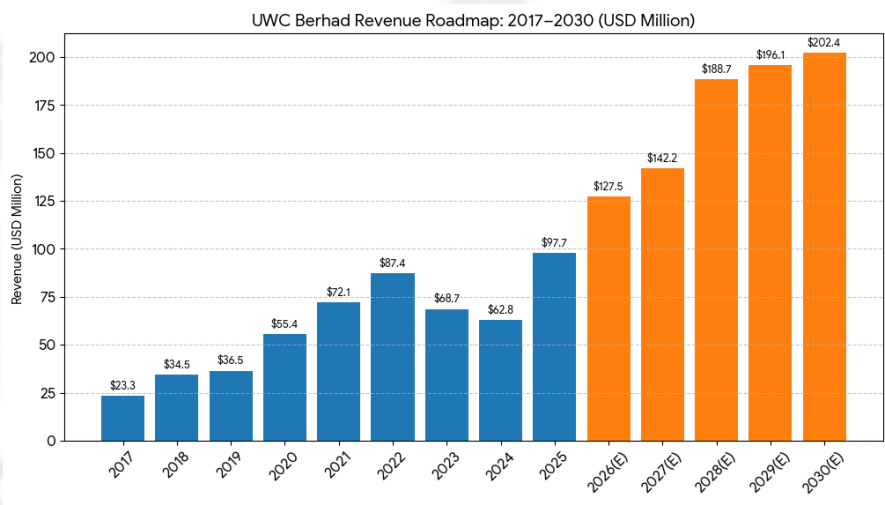
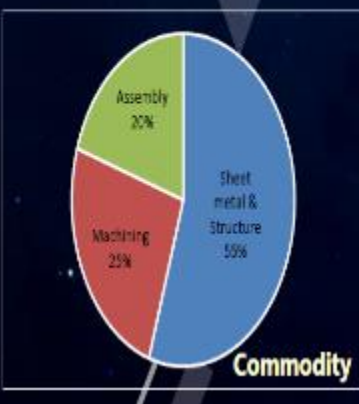


As At 31 July 2025



# Introduction of UWC Berhad

## Head Quarter In Penang, Malaysia, Listed in Main Board KLSE



# Introduction of UWC Berhad



## Head Quarter In Penang, Malaysia, Listed in Main Board KLSE

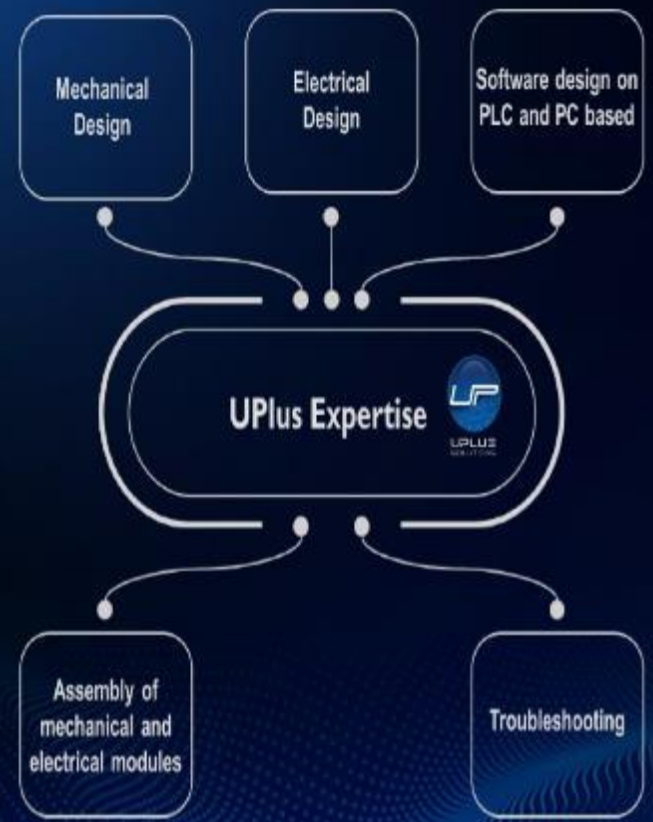
### UWC Maps in Bandar Cassia



Total = 33.9 Acre

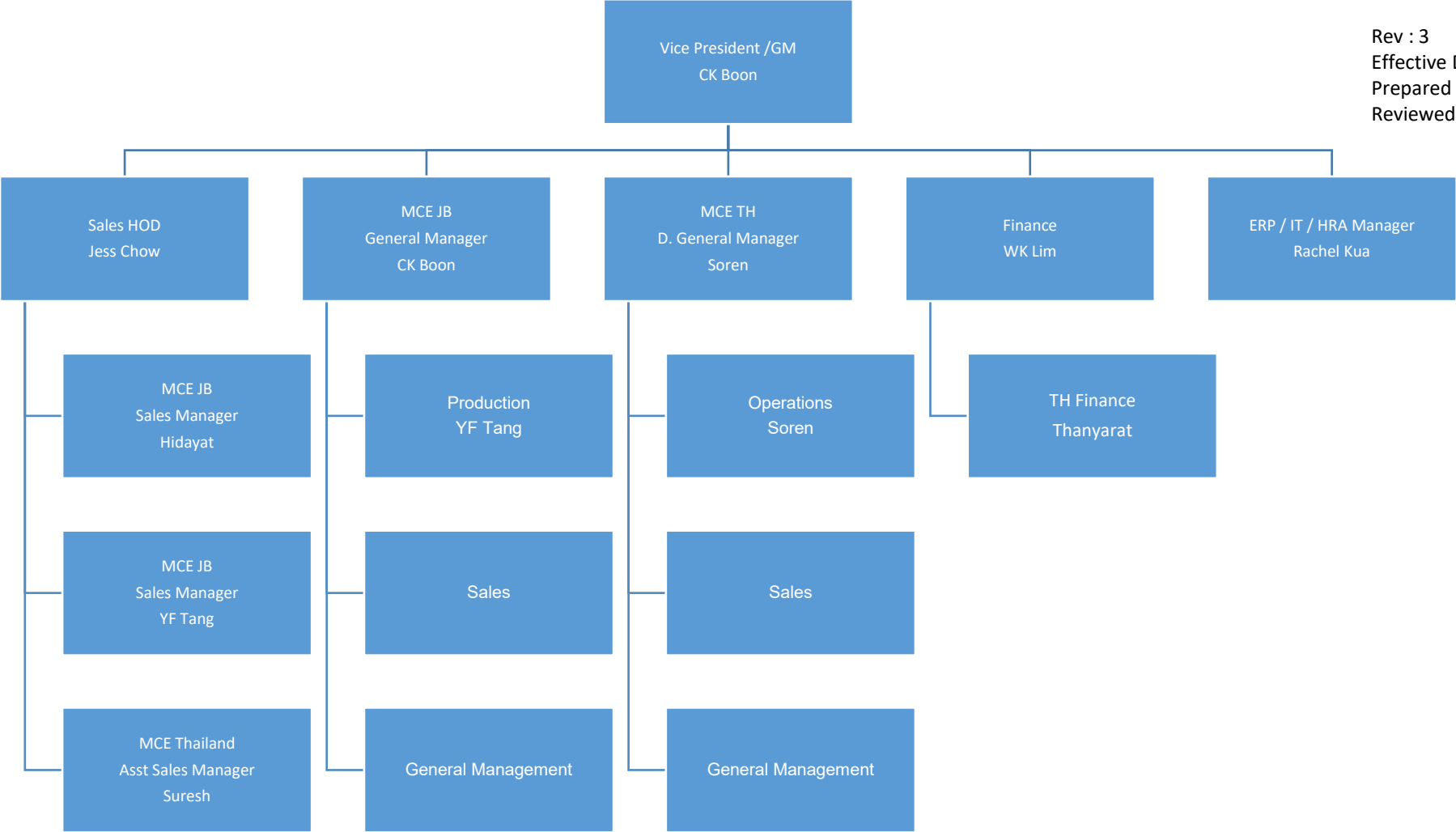


### UWC Manufacturing Hub (UPLUS Solutions)

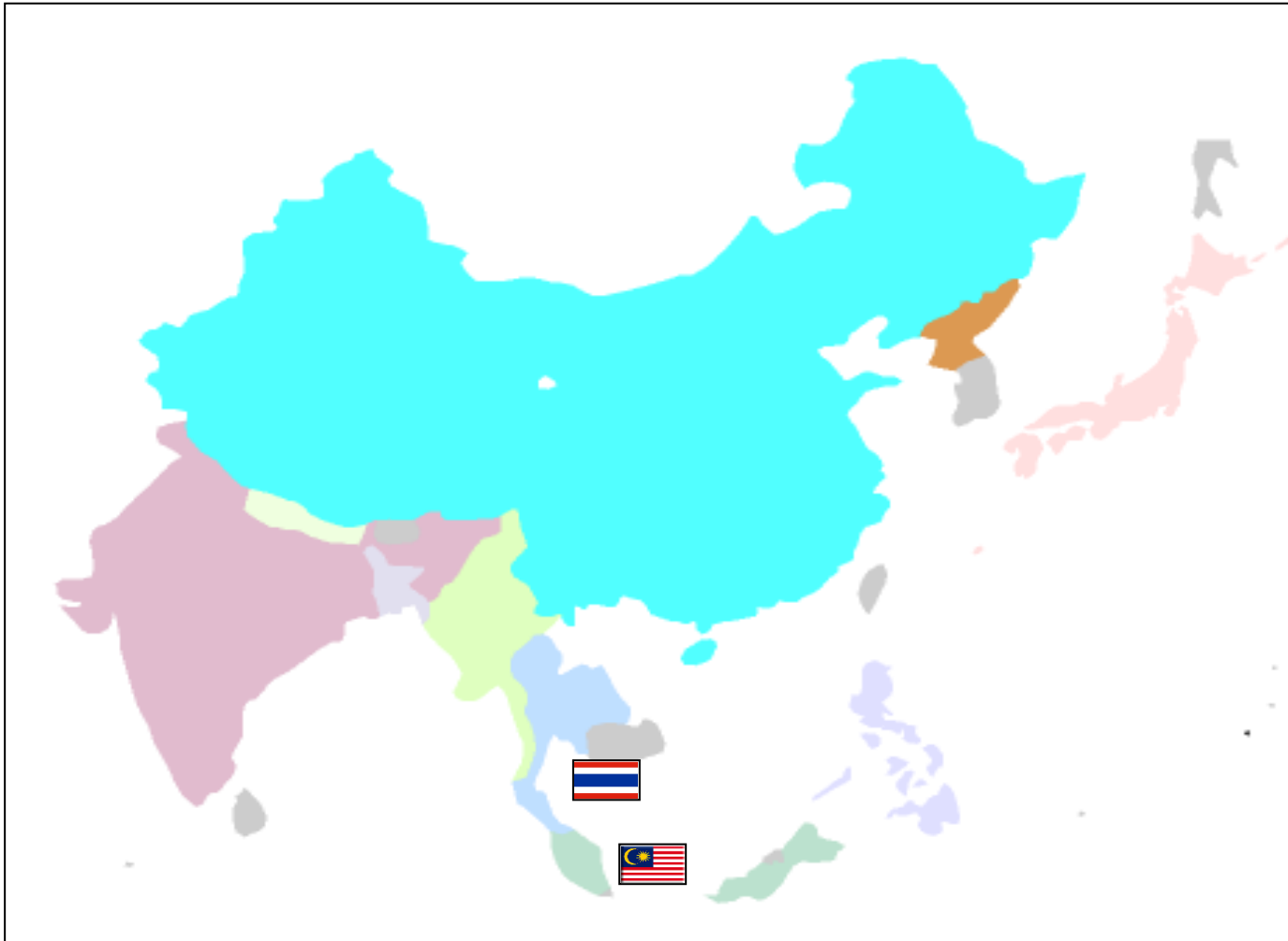


Acquired in 2020  
- Manufacturing & designing of automation solutions







Rev : 3  
Effective Date: 1-Dec-2025  
Prepared by: Rachel Kua  
Reviewed and Approved by: CK Boon



MCE Headcount and Factory Size  
人数和工厂规模分布

MCE Malaysia   
Factory size : 8,806 m<sup>2</sup>  
Headcount : 213

MCT Thailand   
Factory size : 5,472 m<sup>2</sup>  
Headcount : 165

As at 5 Feb 2026 :  
Total group headcount = 378  
Total Factory Size = 14,278 m<sup>2</sup>





DESCRIPTION	MCE JB MALAYSIA Precision Stamping	MCE JB MALAYSIA Mechanical Integration	MCE THAILAND Precision Stamping	MCE THAILAND Mechanical Integration
Mechanical Integration Design				YES
DFM	YES	YES	YES	YES
Factory Automation		YES		
Prototyping	YES	YES	YES	YES
Jig & Fixture	YES	YES	YES	YES
Tool Design & Servicing	YES		YES	
Laser Turret & Press Brake		YES		YES
Stamping (Progressive & Manual)	YES		YES	YES
Secondary Processes	YES	YES	YES	YES
Supply Chain Management		YES		
Mechanical Assembly		YES		YES
Mechatronics Integration		*Outsource		
PCBA Level Electronics Development and Integration		*Outsource		
Embedded and Apps Software Development and Integration		*Outsource		



**Automotive Consumers Industrial/Semi-con Print**

汽车，消费电子，打印机、工业、半导体钣金加工



**AUTOMOTIVE**

Stamped components and assemblies for Car Seats, Locks etc



**CONSUMERS**

Consumer sheet metal components



**PRINT**

Fabrication and subassemblies of large format Printers and Scanner



**INDUSTRIAL/SEMI-CON**

Full Turn-key fabrication





# Print 打印机



## PRINT

Fabrication of commercial & Large  
Format plotter, 3D Printer



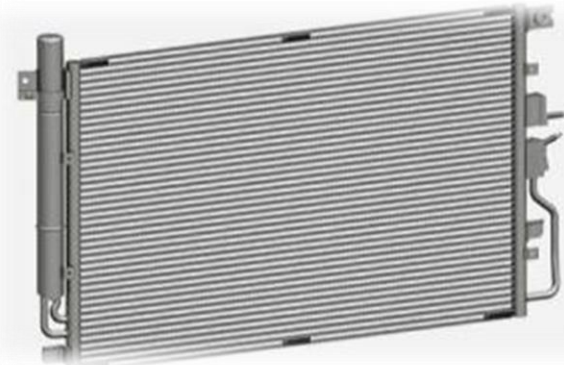
## PRINT

Stamping of high volume consumer  
printers with cosmetics AL casing





## Car Cooler and Car Seats



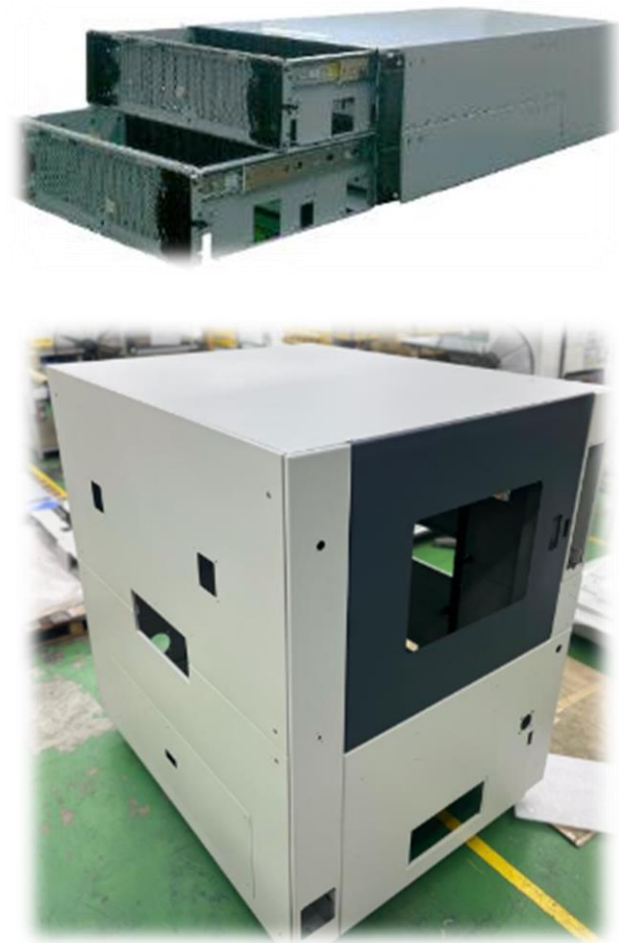


## One Stop Mechanical Solution



**Size products box of 1.2meter x 0.9 meter of solar energy power storage. Full mechanical Integration.**

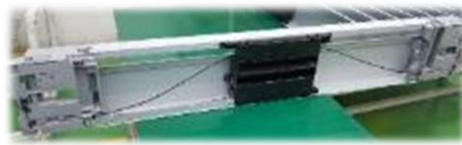
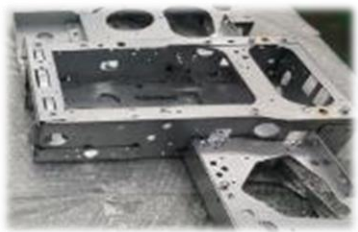
Laser-> Bending->Stacking->Welding->Grinding->Buffing->Powder Coating-> Delivery





# MCE Is At Level 3 美特尔处于第三级别

As defined by MCE



**Level 1:**  
**MECHANICAL COMPONENTS ONLY:**

Fabrication of piece parts.

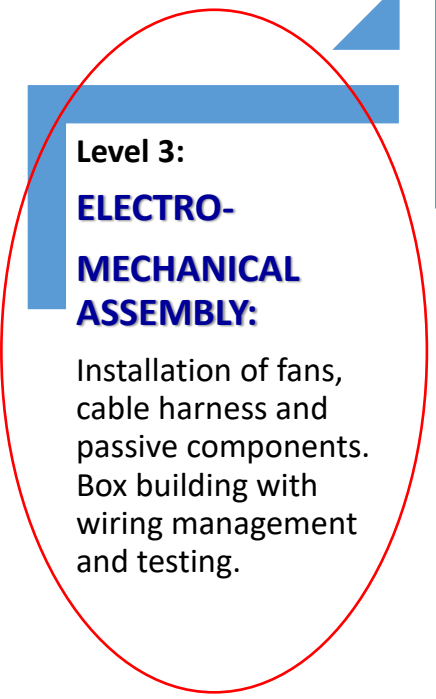
**Level 2:**  
**MECHANICAL ASSEMBLY:**

Piece parts assembly into a module or part of an enclosure.

**Level 3:**

**ELECTRO-MECHANICAL ASSEMBLY:**

Installation of fans, cable harness and passive components. Box building with wiring management and testing.



**Level 4:**

**ELECTRONIC ENCLOSURE ASSEMBLY:**

Installation of intelligent power supplies, complex cable assemblies, back planes, thermal control. All components fully wired and tested.

**Level 5:**

**PCBA AND SOFTWARE INTEGRATION:**

Discrete components design/PCBA integration, FW burnt-in or SW integration. Boards & mechanical subassemblies.

**Level 6:**

**BOX BUILD AND DROP-SHIP:**

Design, product bring-up, mass production, self-test/Customer Joint test of finished products. Logistics management to OEMs or end customer warehouse.



# MANUFACTURING & ENGINEERING UPGRADE 制造与工程升级

## Technology Upgrading 技术与机械设配升级



Machine capabilities :  
X : 2134 x Y: 813 x Z : 762 mm  
4 axis

**HAAS VF7 CNC machine**



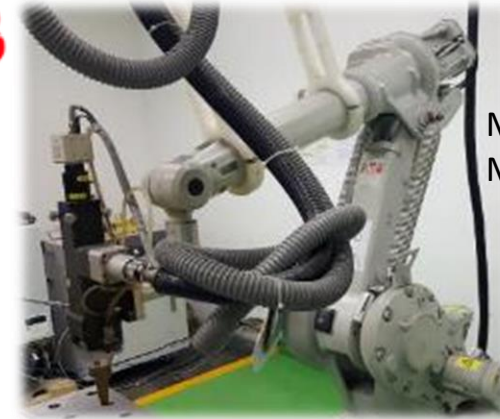
Machine capabilities :  
7 axis auto gauge,  
3 meter length

**AMADA HM1003 Press brake**



Machine capabilities :  
5 feet x 10 feet  
Max Power :4KW

**HAN\*S Fiber laser cutting machine**



Machine capabilities :  
Max power :1.5 KW

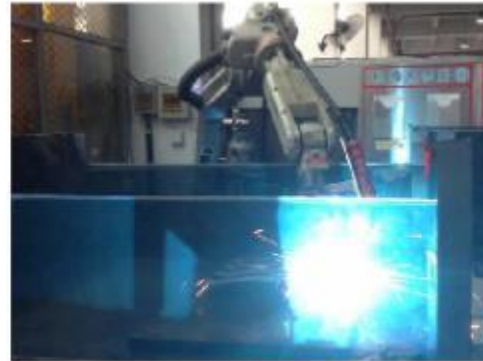
**ABB robotic laser welding machine**

# MANUFACTURING 制造业

## Secondary Processes 二次加工工艺



Weld - TIG



Robotic Weld – Automotive parts



Multi Spindle Taps



Hairline Deburring machine



Clinch



Weld - Projection



TOX



Laser Engraving



### Silkscreen



### Auto Conveyor Powder Coat & Paint



FINISHING	IN-HOUSE	STRATEGIC PARTNER
Silkscreen	✓	
Powder Coat	✓	
Spray Paint	✓	
Zinc Plate		✓
Anodizing		✓
Sand Blasting		✓

# QUALITY 品质与质量管理

## Certifications 认证/证书



Certificate of Registration

CERTIFICATION	MCE JB Precision Stamping	MCE JB Mechanical Integration	MCE THAILAND Precision Stamping	MCE THAILAND Mechanical Integration
ISO 9001:2015	AMER 27572 (until 27 May 2028)	AMER 27572 (until 27 May 2028)	TH22/00000629 (until 5th Aug 2028)	TH22/00000629 (until 5th Aug 2028)
ISO / IATF 16949	--	--	IATF 0580021 SGS TH22/00000628 (until 5th Aug 2028)	IATF 0580021 SGS TH22/00000628 (until 5th Aug 2028)
ISO 14001	QA-D/MYS/14001/ AMER14253 (until 30 Sept 2028)	QA-D/MYS/14001/0040 AMER14253 (until 30 Sep 2028)	--	--
ISO 13485:2016	230525066001 (until 22 May 2028)	230525066001 (until 22 May 2028)	--	--



# QUALITY 品质与质量管理 Certifications 认证/证书



**Malaysia ISO 13485**  
MCE Technologies Sdn Bhd  
(MEDICAL Devices)

**Malaysia ISO 9001**  
MCE Technologies Sdn Bhd

**Malaysia ISO 14001**  
MCE Technologies Sdn Bhd



**Thailand ISO 9001**  
MCT (Thailand) Co. Ltd  
(Phetchaburi)

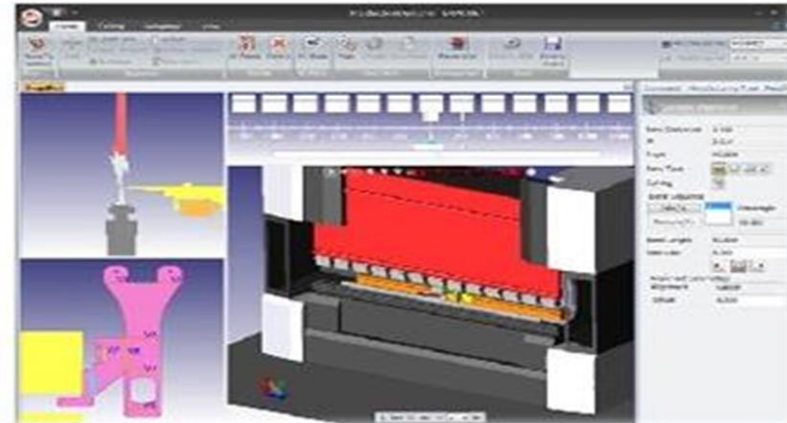
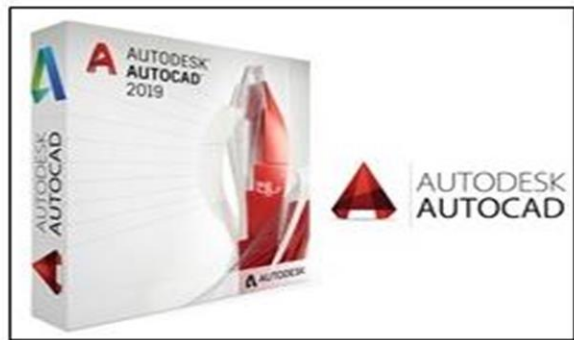
**Thailand ISO 9001**  
MCT (Thailand) Co. Ltd

**Thailand IATF 16949**  
MCT (Thailand) Co. Ltd



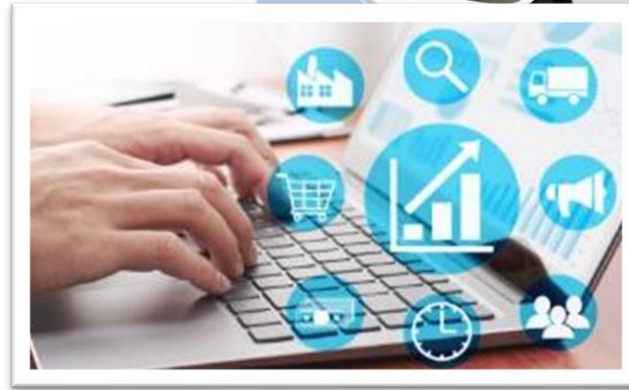
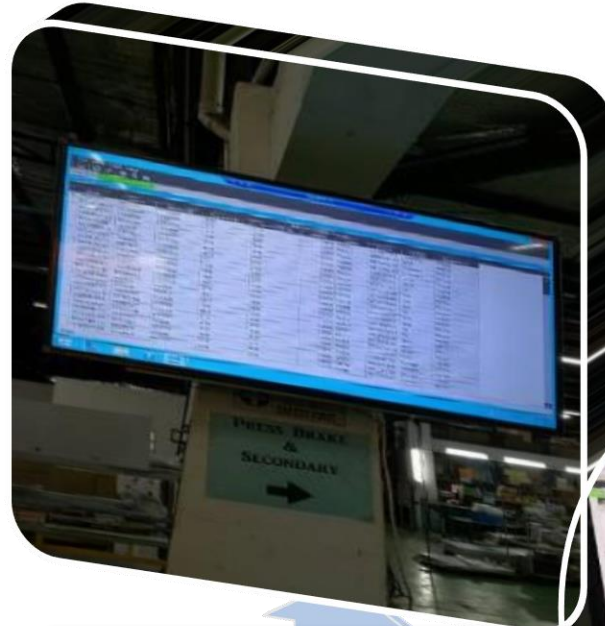
# MCE Factories 美特尔工厂

## CAD Software 三维软件





## EPICOR ERP系统



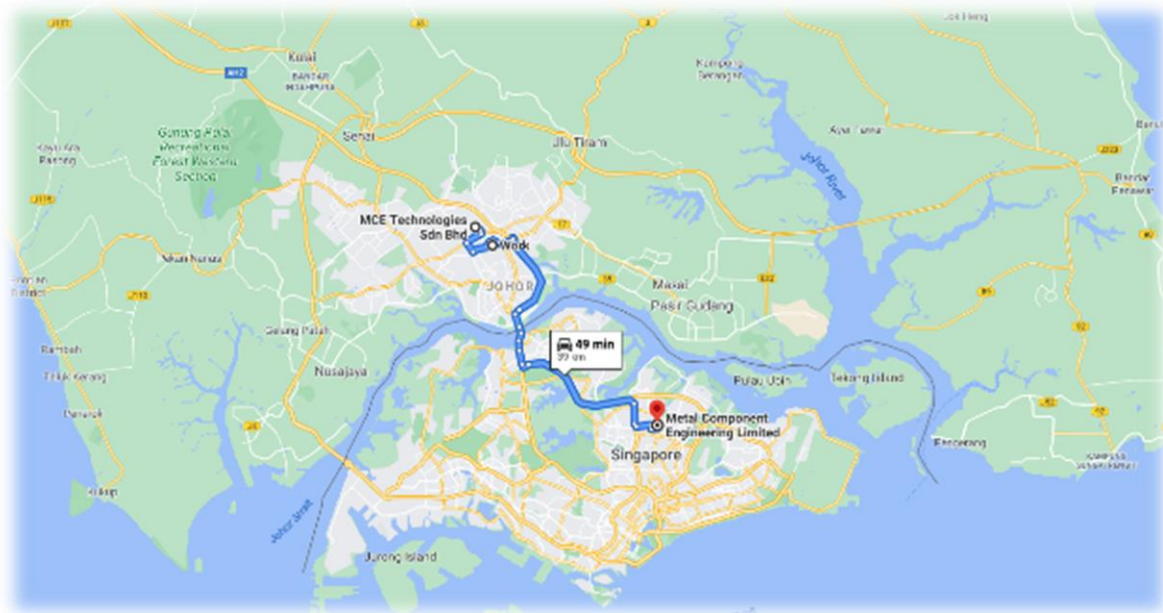
**Remark:**

Implemented Epicor E9 in 2013, upgraded to E10 in 2018, further upgraded the system to E11-Kinetic in May 2022. Further upgrade in 2024 to Epicor SAAS.



**INTRODUCING...**

**MCE MALAYSIA**



**JOHOR -TAMPOI**

Lot Ptb 18574, 7, Jalan Tampoi 7/4  
Kawasan Perusahaan Jalan Tampoi  
81200 Johor Bahru, Johor Malaysia  
Telephone: +607 331 1125

# STAMPING FACILITIES 冲压设备

## Machine List – Presses 冲压机吨数列表



TYPE	DESCRIPTION (TONNAGE)	UNITS
PROGRESSIVE & MANUAL	Yadon 400T	1
	Chin Fong 300T	1
	Aida 160T	1
	Aida 150T	1
	Aida 110T	1
	Seyi 80T	1
	Aida 60T	1

Updated as @JUN 2024



# Machine List – Tool Maintenance/Fabrication Facilities

机器清单 – 模具维护/制造设施



TYPE	DESCRIPTION	Unit
TOOLS FACILITIES	Wire Cut	1
	Milling	4
	Grinding	3
	Super Drill	1
	CNC Machining	5



# Sheet Metal Fabrication 钣金加工设配清单



MACHINES	BRAND	UNITS
Laser Cut (4kw)	AMADA	1
Fiber Optic Laser (4kw)	HAN'S	2
Laser Cut (2kw)	AMADA	1
Turret Punch	AMADA	2
CNC Machining	HAAS/Makino/Feeler	5
Press Brake (50 tons)	AMADA	2
Press Brake (80 tons)	AMADA	2
Press Brake (100 tons 3m)	AMADA	3
Press Brake (130 tons 3.2m)	LX-WE67K-DE15	1
Laser Engraving/Marking	HAN'S	1
Hi-Spinning machine	BROTHER	5
Tapping	TOYOKS	4
TIG Welding	KOBEWEL 300GP	14
MIG Welding	KOBEWEL KM285	5
Spot Welding	KIMURA/DENYOKI	6
PEM Setter / Stud Welding	PEM-Haeger /SOYER BMS-8N	5 +3
Hairline / Deburring	STAR MASTER	2
Hand Held Laser Welding	ATC	2
Powder Coating Line	Customized	2
Conveyor Powder Coating	Customized	1



# In-House Powder Coating , Spray Painting 厂房车间喷粉，喷漆



Auto conveyor line (150 meter) :  
*Degreasing ->Phosphating->Pre-heat ->Powder booth ->Curing.*

Max part size : 2.4 (H) X 1.4 (W) meter

Max load per hanger : 25 kg



Box Oven Type :

Max Part Size : 5.8 (L)x 2.5 (H) x 1.5(W) meter

Water Curtain Spray Booth

Powder Source:

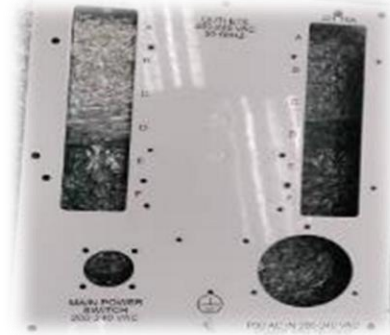
Sherwin Willian, Cardinal, AkzoNoble,

IFS Coating, Dupont

Oxyplast, Colour Top



Full Spectrum of powder part range



Experienced in handling of **ESD powder** with anti-static test, conductive test procedure.



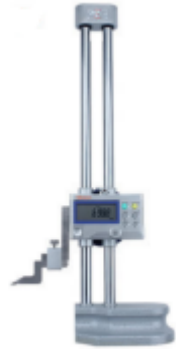
# Machine List - QA Equipment 品质部测量仪器清单



CMM



Profile projector



High Gauge



Tension Tester



Spectrometer



Elcometer



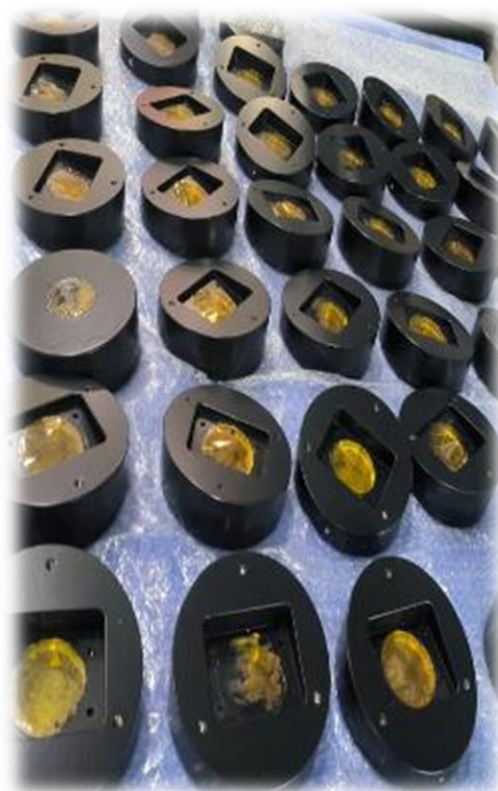
Glossiness Meter

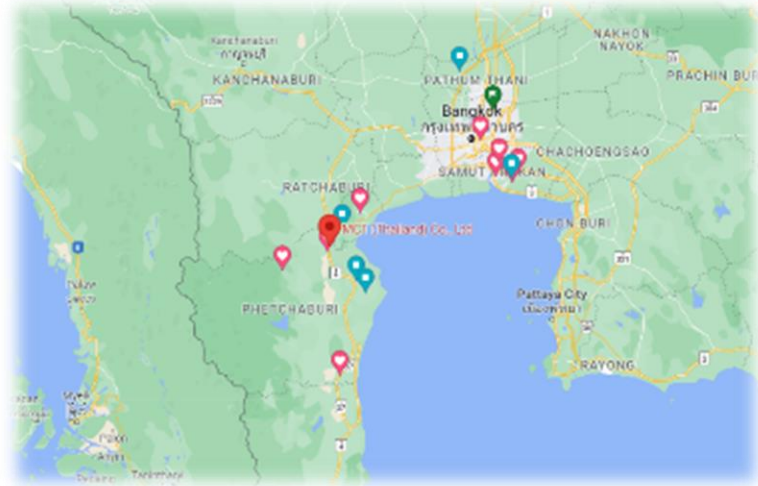


Salt Spray Testing Chamber



TYPE	DESCRIPTION	UNITS
QA EQUIPMENT	CMM (900*2000*800)	2
	Spectrometer	1
	Elcometer	2
	Tension tester	1
	Glossiness Meter	1
	Profile Projector	2
	High Gauge	3
	Salt Spray Test	1

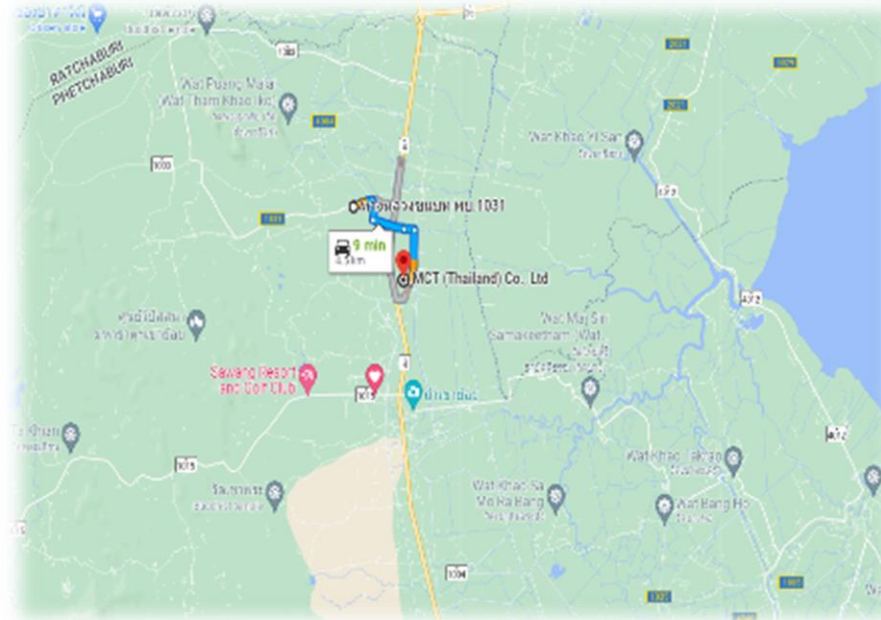




## INTRODUCING... MCE THAILAND

### Phetchaburi

MCT (Thailand) Co., Sraphang, Khao Yoi  
District, Phetchaburi  
76140, Thailand  
Tel : (+66) 328 906 625



### Phetchaburi- Nong Chumpon

MCT (Thailand) Co., Nong Chumpon,  
Koaw Yoi, Phetchaburi ,  
76140, Thailand

# MCE PHETCHABURI 美特尔泰国

## Machine List – Presses 冲压机吨数列表



TYPE	DESCRIPTION (TONNAGE)	UNITS
PROGRESSIVE	400	2
	200	2
	250	1
	300	1
	110	4
	80	2
	60	1
MANUAL	200	6
	110	4

# MCE NONG CHUMPON 美特尔泰国

## Machine List – Presses 钣金加工设配清单



TYPE	DESCRIPTION	UNITS
SOFT TOOLS	Laser 4kW (CO2)	2
	*Laser 6kW (FO)	1
	Turret	1
	Press Brake 1.2m/2m	2 / 4
	Spot Welding	2
	Tig Weld	2
	Tapping	2
	Spinning	1
	Semi-auto Ultra Sonic	1
	Degreasing	1



### Expansion mode:

- Having the in-house powder coat, spray paint facilities ready in 31 Dec 2023-Done
- Reserve empty space for future expansion which may cater up to another 3000 SQM. –Q4 2025





TYPE	DESCRIPTION	PHETCHABURI
TOOLS FACILITIES	Wire Cut	3
	Milling	2
	Grinding	2
	Super Drill	1

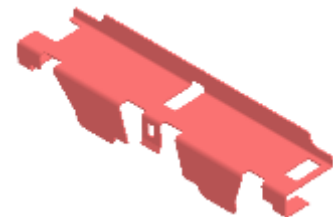
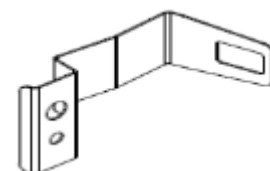
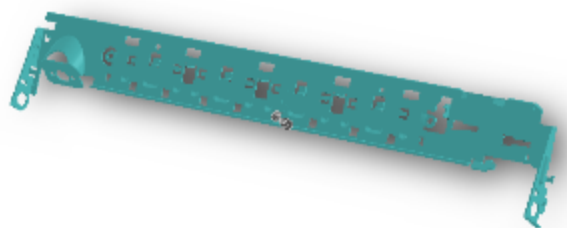
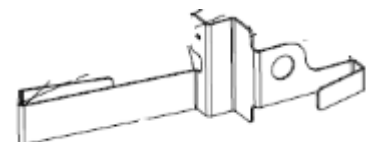
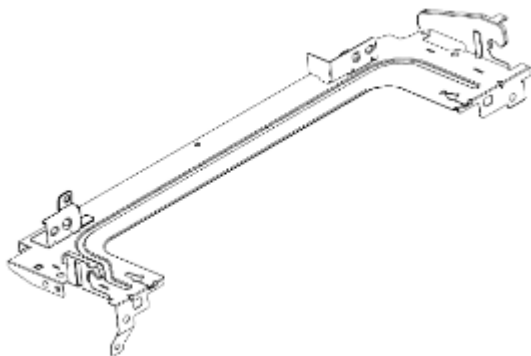
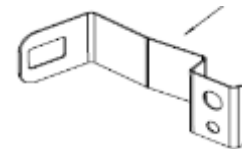
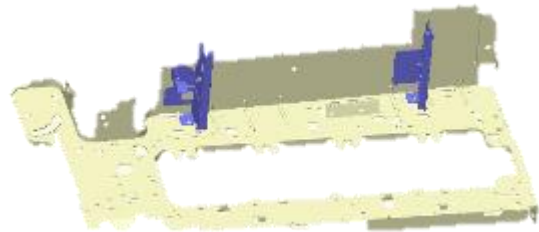


## Machine List – QA Equipment 品质部测量仪器清单



TYPE	DESCRIPTION	UNITS
QA EQUIPMENT	CMM 2m	1
	VMM Scope	1
	Height Gauge	2





# MAJOR CUSTOMERS 主要客户



Print Automotive Industrial/Semi-con Consumers  
打印 汽车 工业/半导体 消费电子

## PRINT



## AUTOMOTIVE



## INDUSTRIAL



## SEMI-CON/LIFE-SCI



## CONSUMERS

FISHER & PAYKEL





Amada Combo Fiber + Punching MYR 4.5mil x1



For Engineering upgrading purpose : Plan by Q4 2026

Fiber Optic 6000W 1 unit MYR1.2 mil



To Handle Higher thickness material of 6-10 mm : Plan by Q3 2026

NC Benders 6+1 Axis , 2 units MYR 550K



Machine upgrading :1 unit by Mar 2025, another by Q4 2026



Flattening Machine MYR100K, Q4 2026

**Medical Products Certification for Metal Parts : ISO 13485: 2016 certification target to be ready by 15 Jun 2025-Closed**

**Total Plan for MYR 6.35 mil expansion capex**



# Expansion Plan – 2026 Beyond ... 未来产能扩充

Powder Coating Line THB 4Mil-Done



Factory Expansion THB 8.5 mil



Additional space of 1100 SQM



THB 15.5 mil on Fibre Optic , NC Benders



Done in Dec 2025



Done Jan 2026



# Expansion Plan – 2026 Beyond ... 未来产能扩充

Robotic Line for Stamping Operation

Capex : THB 6.8 mil



**Total Plan for THB37 mil expansion capex**

Target ready by Q3 2026



Name	Title	Email	Mobile :
Boon Che Kwang	VP Sales /GM	ck.boon@mce.com.my	+60 12 781 7509 (MY)
Soren	Deputy GM	soren@mce.com.my	+66 92 554 9674 (TH)
Jess Chow	Sales Manager (HOD)	jess.chow@mce.com.my	+60 16 236 4008 (MY)
Suresh	Sales Manager	suresh@mce.com.my	+66 89 963 1462 (TH)

Visit our website :

**MCE : [www.mce.com.my](http://www.mce.com.my)**

**UWC: [www.uwcberhad.com.my](http://www.uwcberhad.com.my)**

*Looking Forward on our future collaboration !*



**THANK YOU!**

**谢谢!**

**TERIMA KASIH!**

**ขอบคุณ**